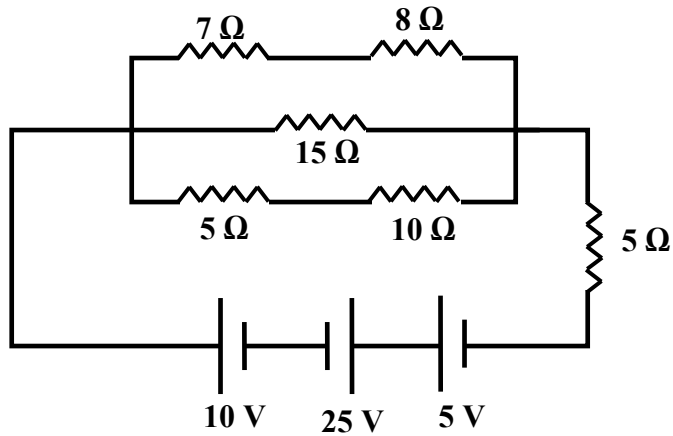


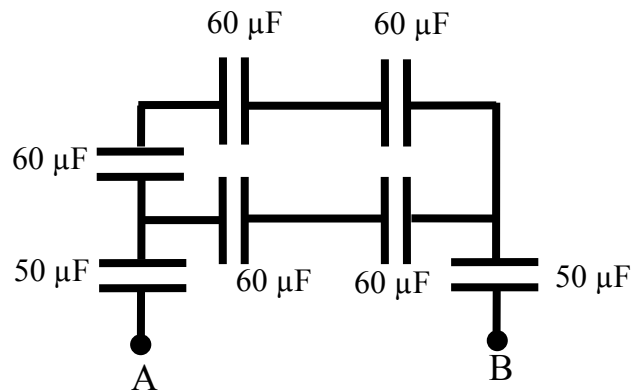
Physics 2212
Exam 3 (practice problems)

1. Find the power delivered to 8 ohm resistor.



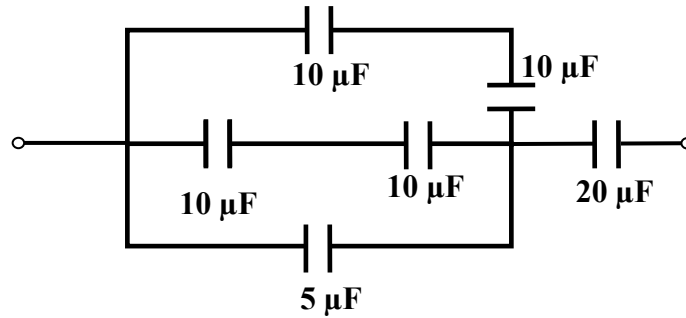
0.89 W

2. What is the equivalent capacitance between points A and B?



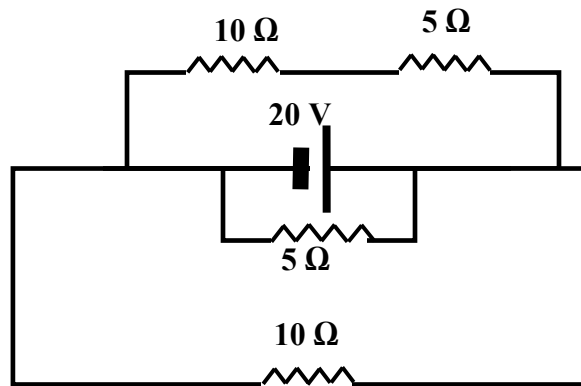
16.6 μC

3. Find equivalent capacitance of the system of capacitors shown in the figure.



8.57 μF

4. Find the current through the battery.



7.33 A

5. How much energy does $20.0\ \mu\text{F}$ capacitor store? The voltage across the capacitor is $10\ \text{V}$.

0.001 J

6. Two circular electrodes (radius of $3\ \text{cm}$), spaced $1\ \text{mm}$ apart, are connected to a $10\ \text{V}$ battery. What is the charge on each electrode?

0.25 nC